

**BIXOLON®**

SAMSUNG mini printers

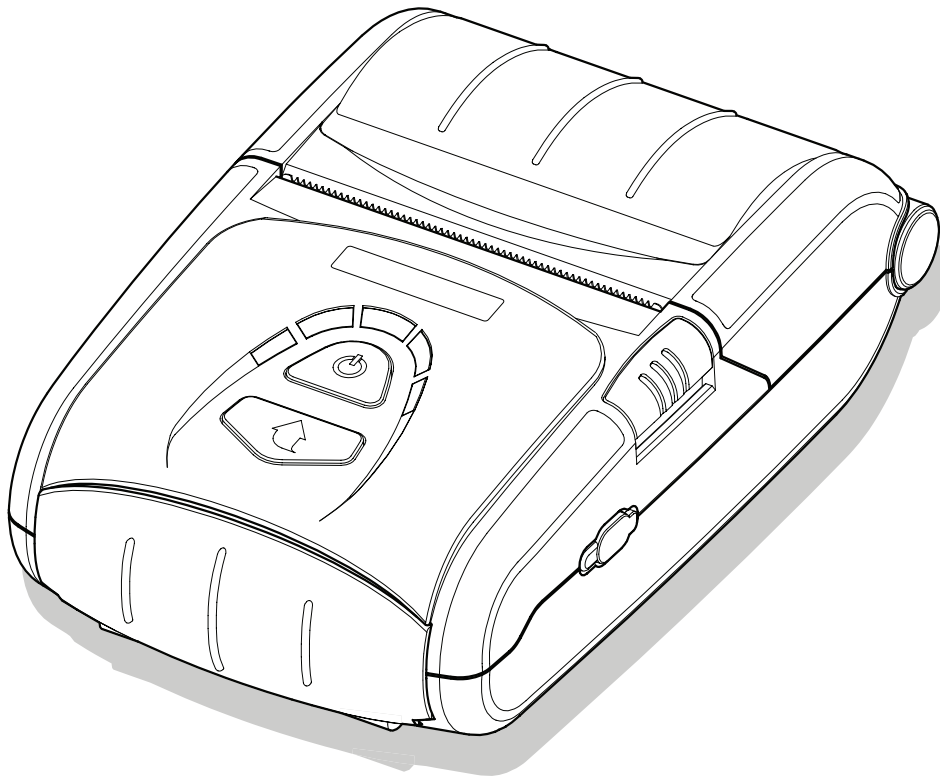


# Unified Utility Manual

# SPP-R200

---

**Mobile Printer**  
**Rev. 1.00**



<http://www.samsungminiprinters.com>

## **■ Table of Contents**

<b>1. Notice.....</b>	<b>3</b>
<b>2. Operating System (OS) Environment.....</b>	<b>3</b>
<b>3. Virtual Memory Switch Manager Usage .....</b>	<b>4</b>
3-1 When Using on a PC .....	4
3-2 When Using on a PDA.....	7
<b>4. NV Image Download Manager Usage .....</b>	<b>10</b>
4-1 When Using on a PC .....	10
4-2 When Using on a PDA.....	13
<b>5. Firmware Download Manager Usage .....</b>	<b>16</b>
5-1 When Using on a PC .....	16
5-2 When Using on a PDA.....	18

## **1. Notice**

This Unified Utility Manual provides information on the utility program used to set printer operation conditions and add functions.

The utility program consists of three functions.

- 1) A function that sets printer operation conditions via non-hardware control, software-based virtual switches (**VMSM: Virtual Memory Switch Manager**)
- 2) A function that facilitates the downloading of image files, such as logos, intended for repetitive printing (**NV Image Download Manager**)
- 3) A function that is used to download and install the latest Firmware, which is subject to ongoing modification for the enhancement of product performance (**Firmware Download Manager**)

## **2. Operating System (OS) Environment**

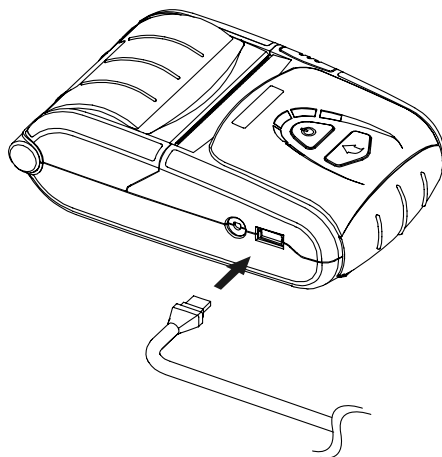
The following operating systems are supported for usage.

- Microsoft Windows 98
- Microsoft Windows NT 4.0
- Microsoft Windows 2000
- Microsoft Windows XP
- Microsoft Windows 2003
- Microsoft Windows Embedded
- Microsoft Windows Vista
- Microsoft Windows CE 4.2
- Microsoft Windows CE 5.0

### **3. Virtual Memory Switch Manager Usage**

#### **3-1 When Using on a PC**

- 1) Connect the printer and the PC via the interface cable (USB or Serial type).  
If using Bluetooth, a cable connection is not necessary.



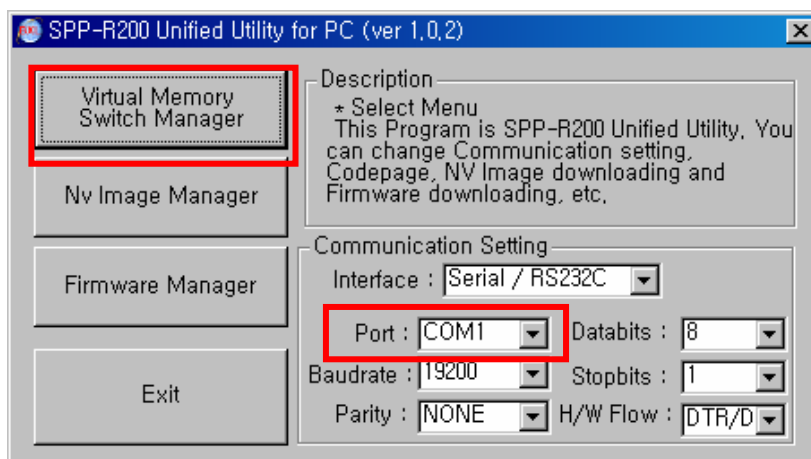
- 2) Turn on the printer power.

- 3) Prepare the Unified Utility executable file to be used on the PC.  
The executable file can be found on the enclosed CD.  
**(SPP-R200 Unified Utility for PC ver 1.x.x.exe)**

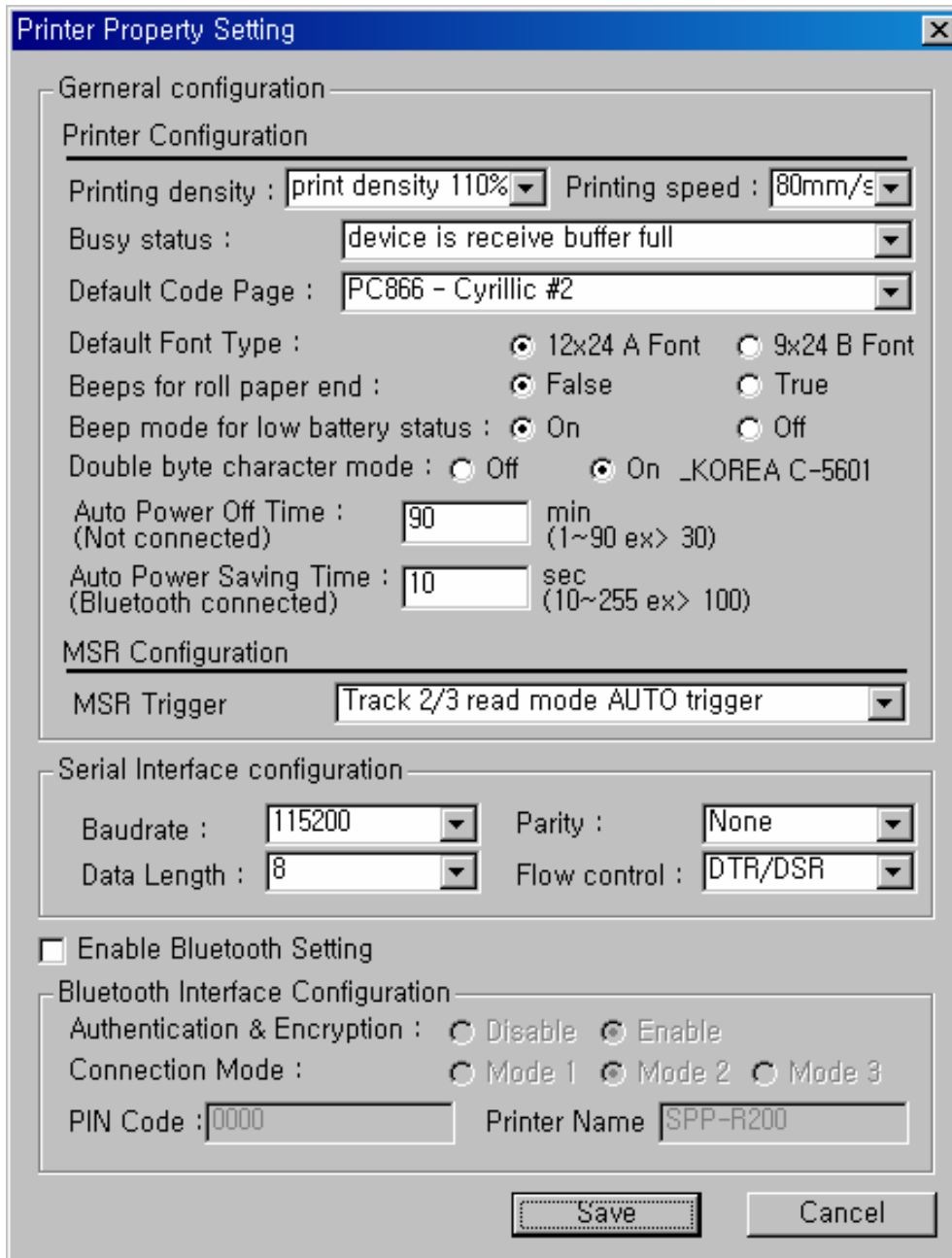
※ The executable file may also be downloaded from the BIXOLON website  
**([www.samsungminiprinters.com](http://www.samsungminiprinters.com)).**

- 4) Run the Unified Utility executable file.

- 5) Select "Port" and click the "Virtual Memory Switch Manager" button.  
Refer to the Bluetooth Connection Manual regarding the Port (may vary according to device).



6) The Virtual Memory Switch settings information of the printer appears on screen.



7) After setting the desired function(s), click the “Save” button to store settings.  
The functions per category are as follows.

Function	Description
Printing Density	Sets printing density Value range is 80~130%
Printing Speed	Sets printing speed Value range is 50 or 70 mm/s
Busy Status	Sets BUSY signal for particular conditions - When device is offline: BUSY signal set when printer errors occur, paper needs loading, receive buffer capacity is surpassed, etc. - When receive buffer is full: BUSY signal set when receive buffer capacity is surpassed
Default Code Page	Sets the default code page (Refer to the Code Page Manual for more detailed information on the Code Pages supported.)
Default Font Type	Sets default font type and size
Beeps for Low Battery	Sets beeping when reaching low battery capacity
Beeps for Paper Roll End	Sets no beeping or beeping when reaching paper roll end
Double Byte Character Mode	Sets double byte language usage mode
Auto Power Off Time	Sets time interval between absence of printer use and automatic turning off of printer power
Auto Power Saving Time	Sets time interval for automatic entering into power saving mode while the printer is in use
MSR Trigger	Sets MSR data scanning mode, 7 modes supported (Refer to “GS ( E” in the Control Commands Manual.)
Serial Interface Configuration	Changes the serial Interface setting *Printer must be reset after change for changed setting to take effect
Authentication & Encryption	Sets or cancels Authentication & Encryption mode when connecting via Bluetooth * If Authentication & Encryption mode is disabled, connection to a device can be done without a PIN Code.
Connection Mode	Sets Mode1, Mode2, or Mode3 when connecting via Bluetooth. - Mode1: connection possible only with the first device with which connection succeeds - Mode2: connection with all Bluetooth enabled devices possible via use of a PIN Code - Mode3: connection possible only with the first device with which connection succeeds and searching or use of connected device possible
PIN Code	Changes the PIN Code required for Bluetooth connections (maximum 12 characters long)
Printer Name	Changes the device name produced when establishing a Bluetooth connection (maximum 12 characters long)

8) Reset the printers.

**3-2 When Using on a PDA**

1) Turn on the printer power.

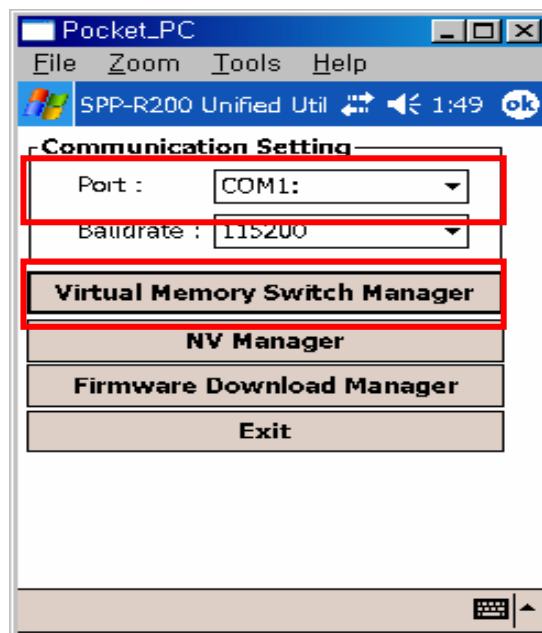
2) Prepare the Unified Utility executable file to be used on the PDA.  
The executable file varies according to CPU and can be found on the enclosed CD.

- **ARMV4: SPP-R200 Unified Utility for PPC armv4 ver 1.x.x.exe**
- **ARMV4I: SPP-R200 Unified Utility for PPC armv4i ver 1.x.x.exe**

※ The executable file may also be downloaded from the BIXOLON website ([www.samsungminiprinters.com](http://www.samsungminiprinters.com)).

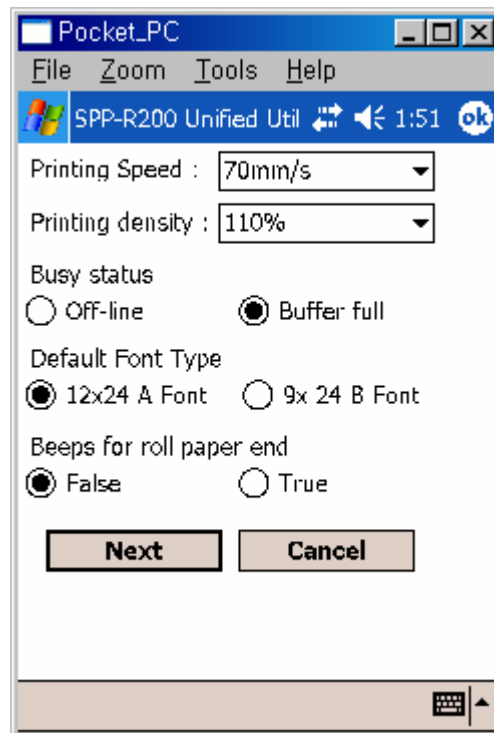
3) Run the Unified Utility executable file.

4) Select "Port" and click the "Virtual Memory Switch Manager" button.  
Refer to the Bluetooth Connection Manual regarding the Port (may vary according to device).

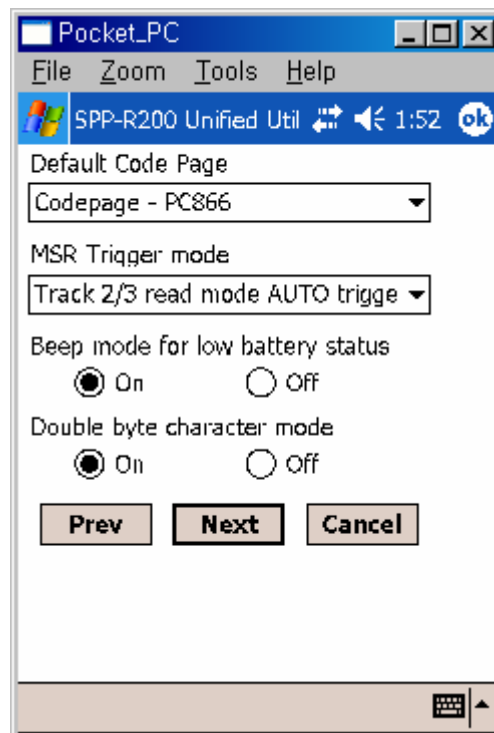


5) The Virtual Memory Switch settings information of the printer is received and shown on screen.

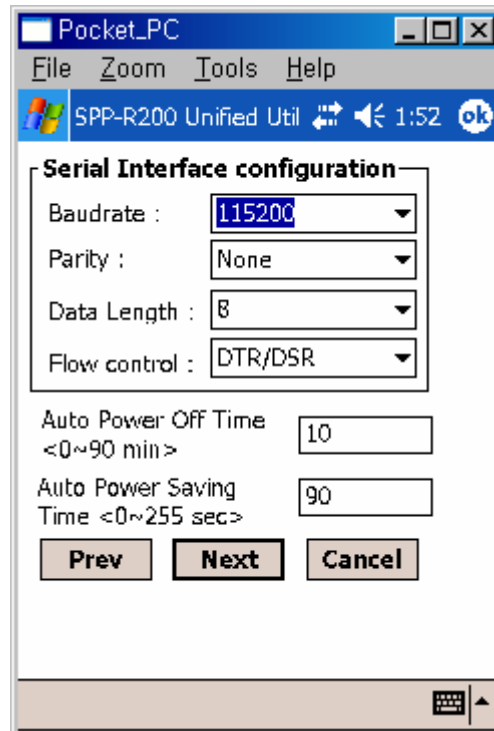
- 6) After setting the desired function, click the “Next” button.  
(The functions per category are identical to those on the PC.)



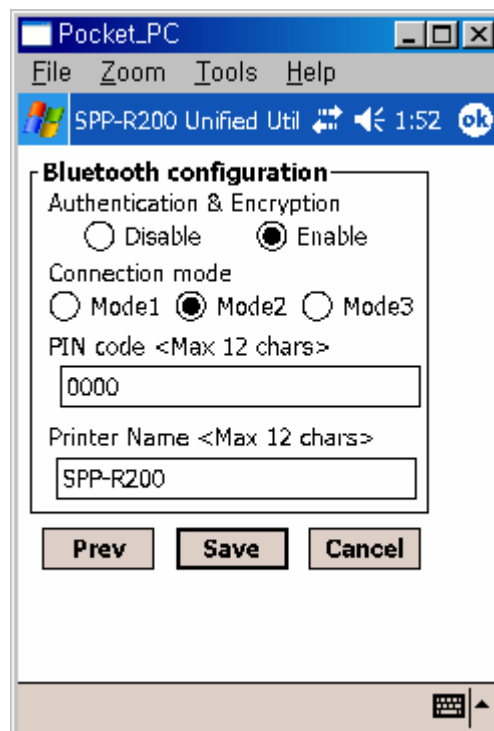
- 7) After setting the desired function, click the “Next” button.  
(Clicking the “Prev” button returns to the previous screen.)



8) After setting the desired function, click the “Next” button.



9) After setting the desired function, click the “Save” button.

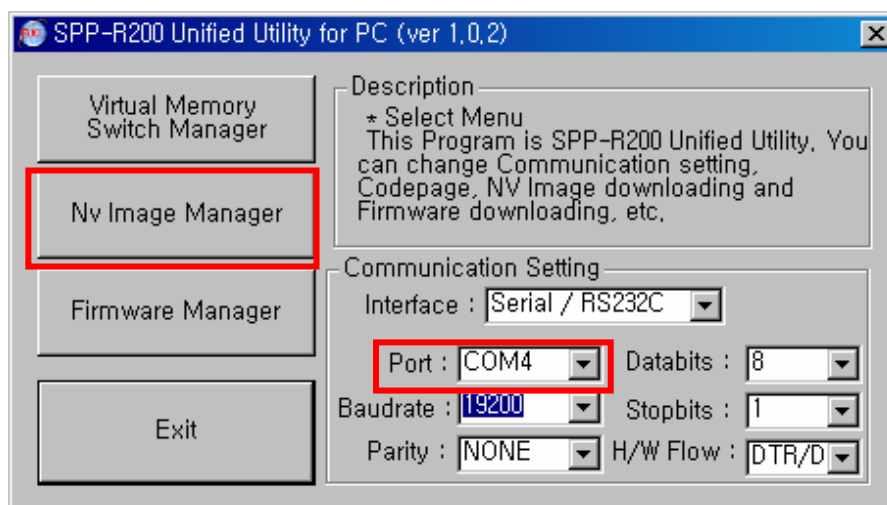


10) Reset the printer.

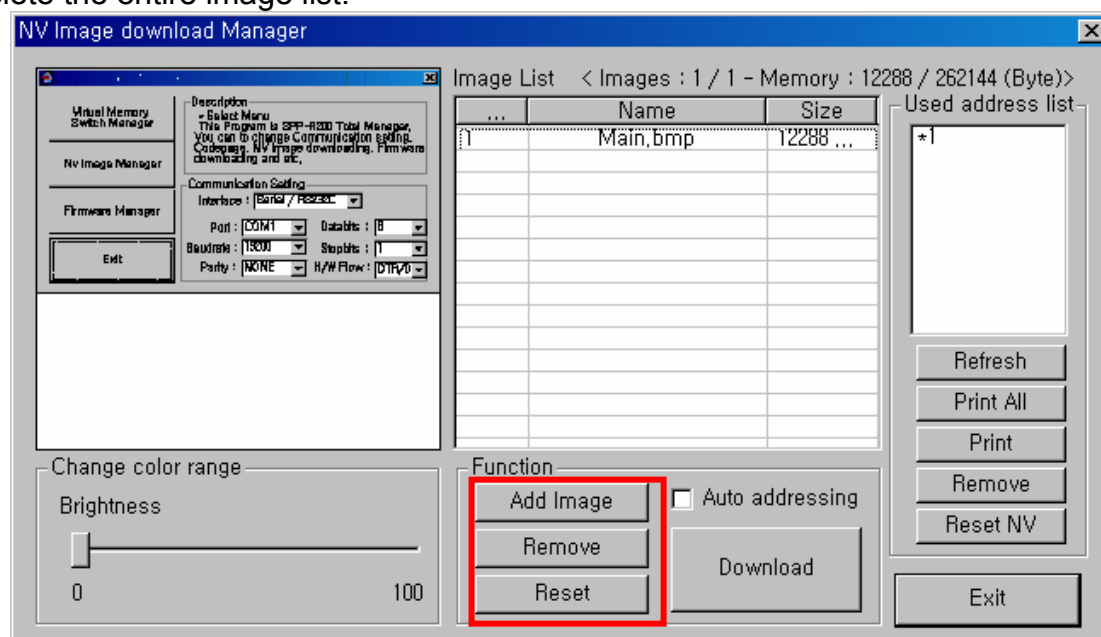
## 4. NV Image Download Manager Usage

### 4-1 When Using on a PC

- 1) The printer connection method and instructions for running the Unified Utility executable file are identical to those provided in “3. Virtual Memory Switch Manager”. Refer to the aforementioned section.
- 2) Prepare the image file on the PC (e.g. Main.bmp)
- 3) Select "Port" and click the " NV Image Manager " button.  
Refer to the Bluetooth Connection Manual regarding the Port (may vary according to device) “



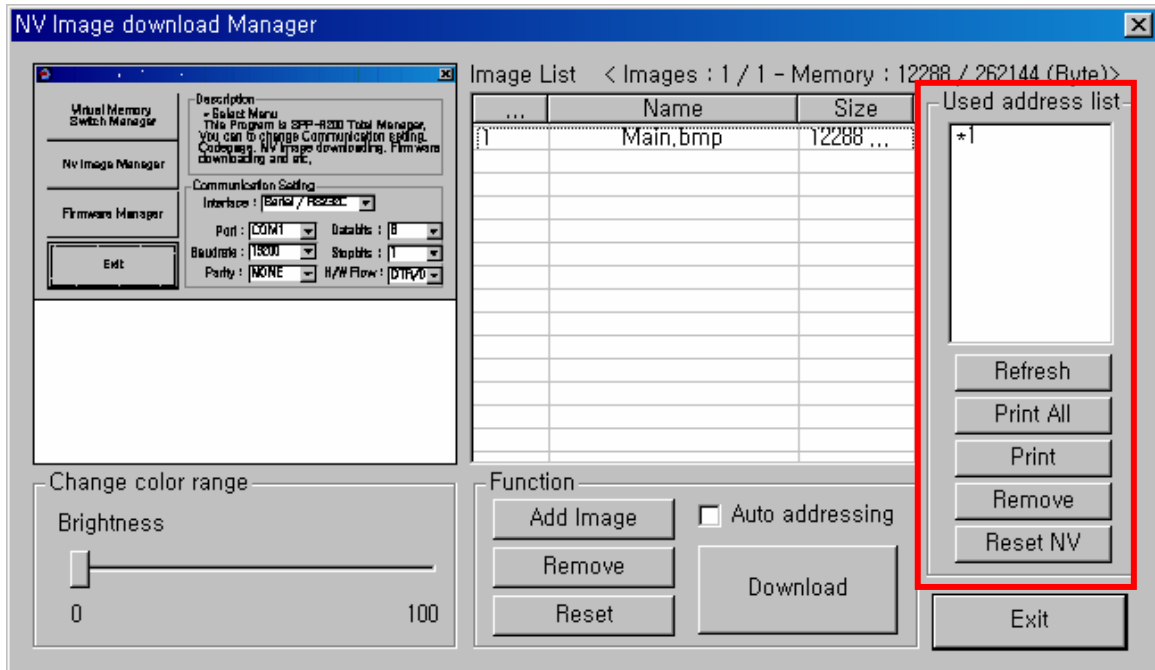
- 4) Click the “Add Image” button to add the desired image(s) to the image list.  
Click the “Remove” button to delete selected image(s), and click the “Reset” button to delete the entire image list.



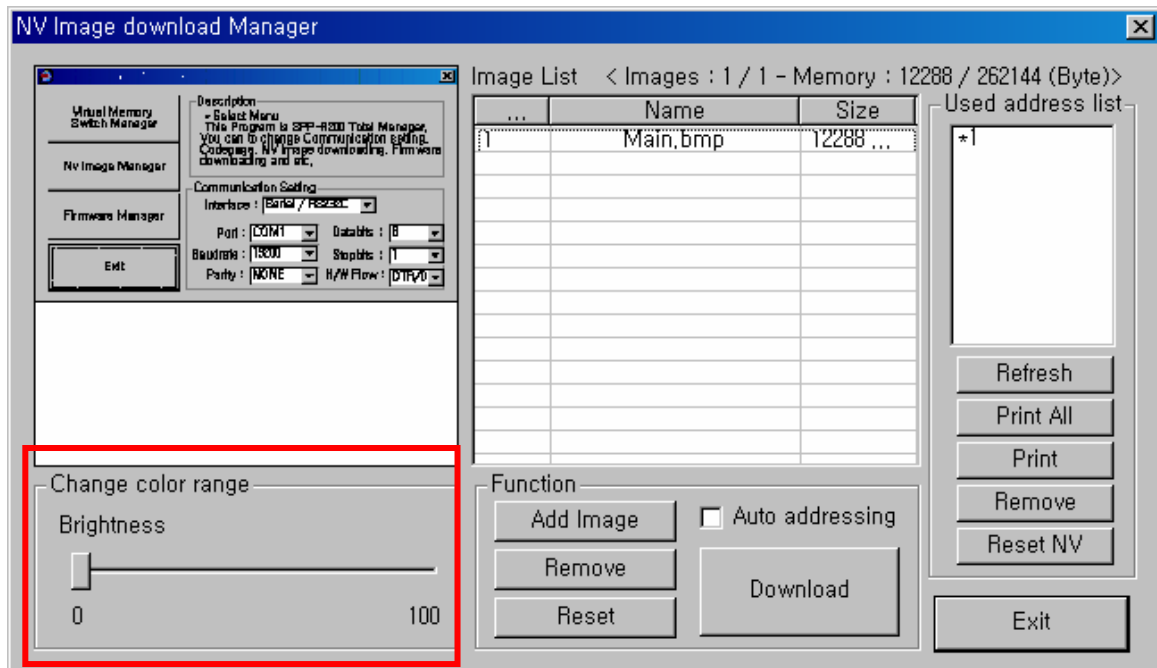
5) The “Used address list” contains the address numbers of saved images.

The following buttons can be used to handle saved images.

- “Refresh” Button: Updates refresh results
- “Print All” Button: Prints all images in the list
- “Print” Button: Prints selected image(s)
- “Remove” Button: Delete selected image(s)
- “Reset NV” Button: Delete all images

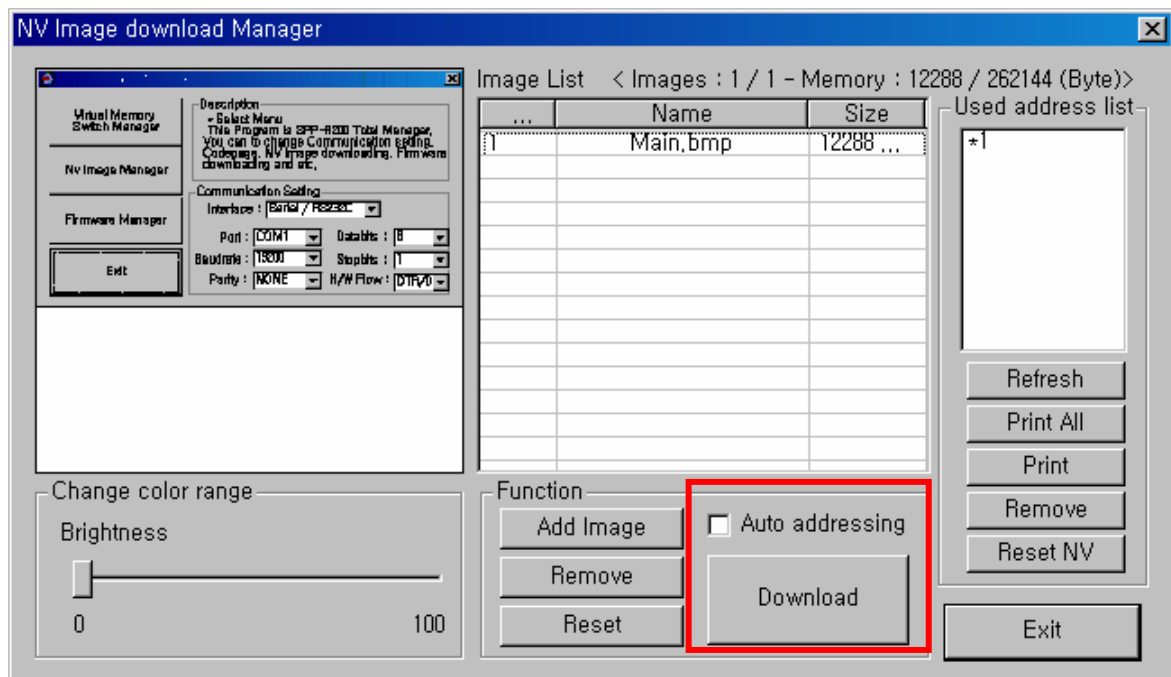


6) After selecting an image from the image list, adjust the brightness level to set the brightness of the image to be downloaded.



7) Click the “Download” button to download the image(s).

Checking the “Auto addressing” box automatically saves address numbers.  
(Manual input is required if unchecked.)



8) When downloading is complete, the saved address numbers appear in the “Used address list”.

**4-2 When Using on a PDA**

1) Turn on the printer power.

2) Prepare the Unified Utility executable file to be used on the PDA.  
The executable file varies according to CPU and can be found on the enclosed CD.

- **ARMV4: SPP-R200 Unified Utility for PPC armv4 ver 1.x.x.exe**
- **ARMV4I: SPP-R200 Unified Utility for PPC armv4i ver 1.x.x.exe**

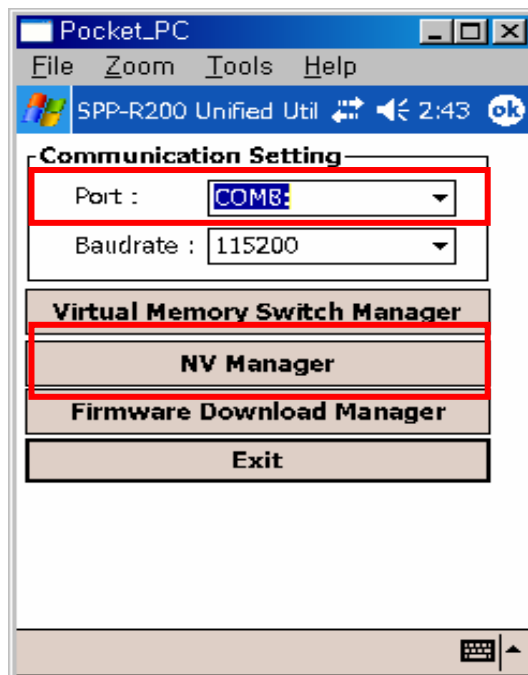
※ The executable file may also be downloaded from the BIXOLON website ([www.samsungminiprinters.com](http://www.samsungminiprinters.com)).

3) Prepare the image file on the PDA (e.g. Main.bmp)

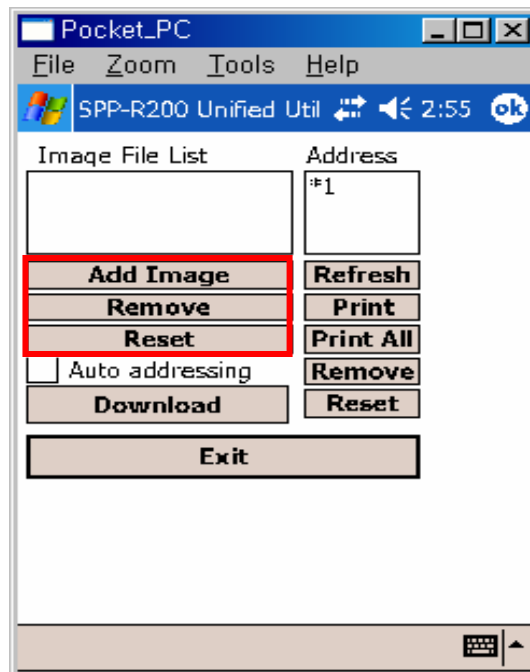
4) Run the Unified Utility executable file.

5) Select "Port" and click the "NV Manager" button.

Refer to the Bluetooth Connection Manual regarding the Port (may vary according to device).



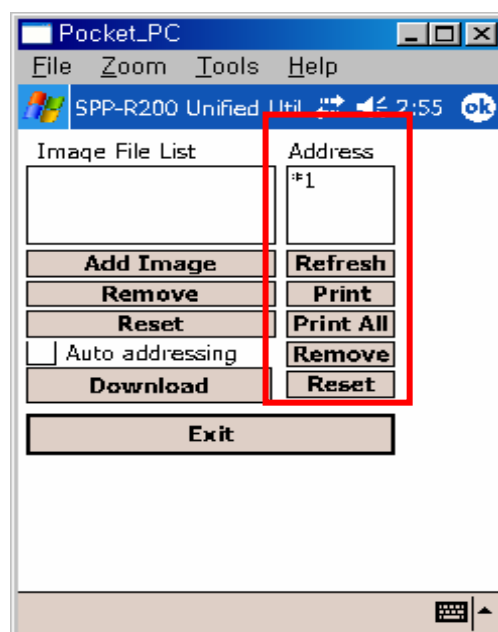
- 6) Click the “Add Image” button to add the desired image(s) to the image list.  
Click the “Remove” button to delete selected image(s), and click the “Reset” button to make modifications.



- 7) The “Used address list” contains the address numbers of saved images.

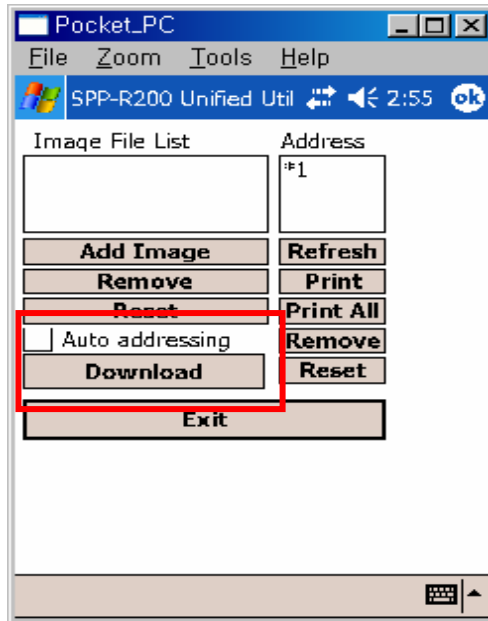
The following buttons can be used to handle saved images.

- “Refresh” Button: Updates refresh results
- “Print” Button: Prints selected image(s)
- “Print All” Button: Prints all images in the list
- “Remove” Button: Delete selected image(s)
- “Reset” Button: Delete all images



8) Click the “Download” button to download the image(s).

Checking the “Auto addressing” box automatically saves address numbers.  
(Manual input is required if unchecked.)



9) When downloading is complete, the saved address numbers appear in the “Used address list”.

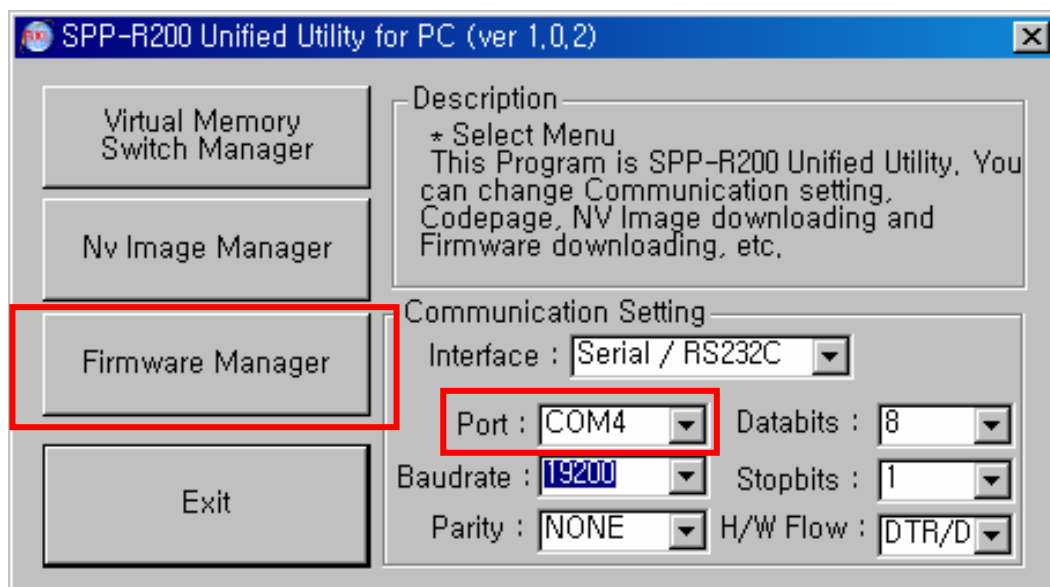
## 5. Firmware Download Manager Usage

### 5-1 When Using on a PC

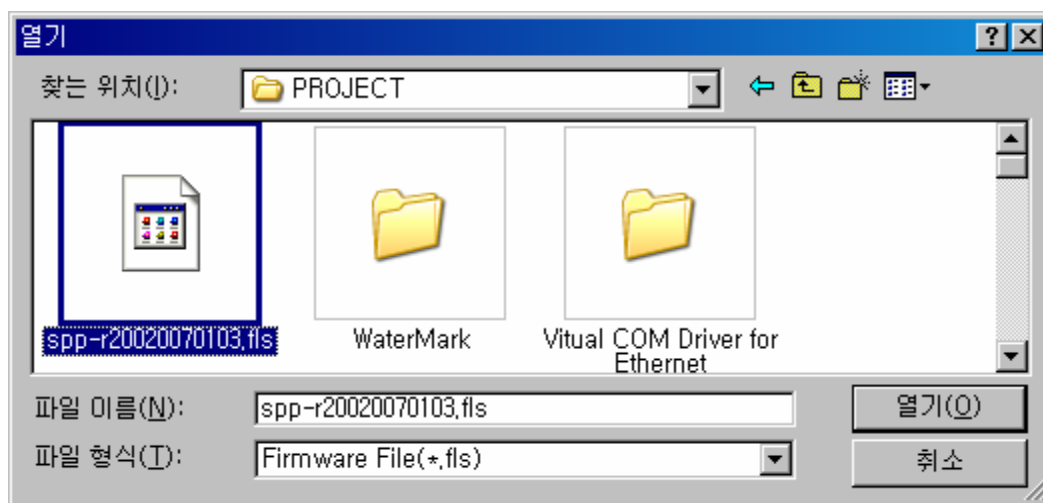
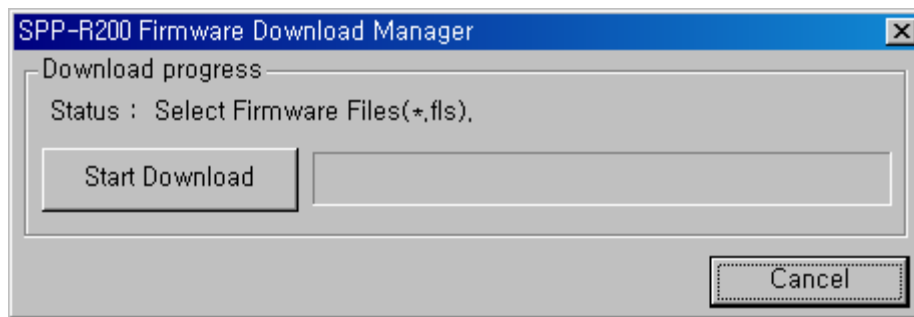
**The printer is already equipped with standard Firmware.**

**Use this function to download and install Firmware that has been modified to upgrade printer performance.**

- 1) The printer connection method and instructions for running the Unified Utility executable file are identical to those provided in "3. Virtual Memory Switch Manager". Refer to the aforementioned section.
- 2) Prepare the Firmware file on the PC. (e.g. spp-r20020070103.flis)  
Firmware can be upgraded to improve printer performance.  
The BIXOLON website provides notice of new Firmware releases and offers updated Firmware for download.  
([www.samsungminiprinters.com](http://www.samsungminiprinters.com))
- 3) Select "Port" and click the "Firmware Manager" button.  
Refer to the Bluetooth Connection Manual regarding the Port (may vary according to device) "



- 4) After clicking the “Start Download” button, select the Firmware file.  
(e.g. spp-r20020070103.flis)



- 5) The printer error lamp blinks from the beginning of the Firmware file download, and turns off when the download is complete.

The printer self-test function can be used to confirm the Firmware update.

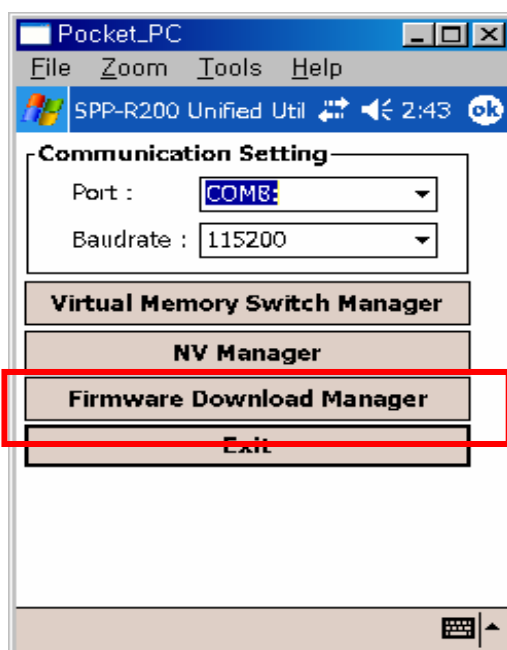
**※ If the printer error lamp remains on, download the Firmware file again after resetting the printer.**

## 5-2 When Using on a PDA

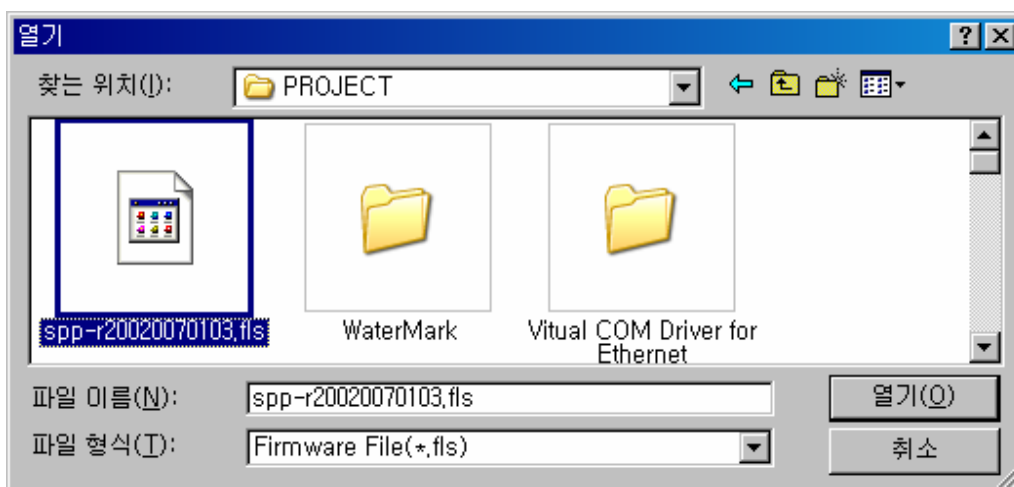
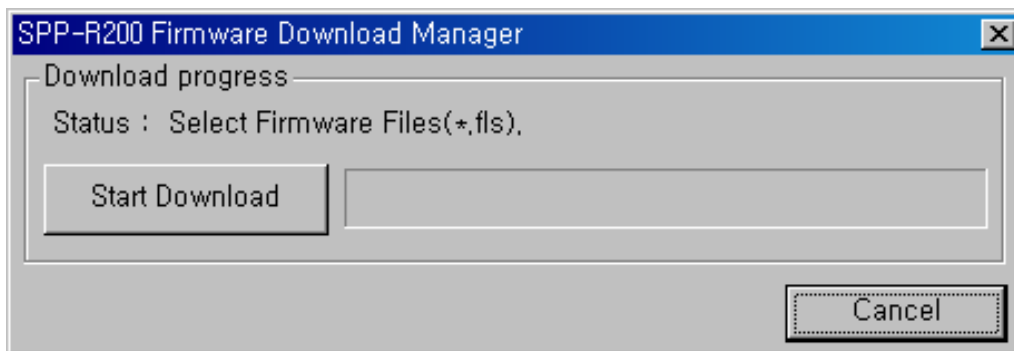
**The printer is already equipped with standard Firmware.**

**Use this function to download and install Firmware that has been modified to upgrade printer performance.**

- 1) Turn on the printer power.
- 2) Prepare the Unified Utility executable file to be used on the PDA.  
The executable file varies according to CPU and can be found on the enclosed CD.
  - **ARMV4: SPP-R200 Unified Utility for PPC armv4 ver 1.x.x.exe**
  - **ARMV4I: SPP-R200 Unified Utility for PPC armv4i ver 1.x.x.exe**
- ※ The executable file may also be downloaded from the BIXOLON website ([www.samsungminiprinters.com](http://www.samsungminiprinters.com)).
- 3) Prepare the Firmware file on the PC. (e.g. spp-r20020070103.flis)  
Firmware can be upgraded to improve printer performance.  
The BIXOLON website provides notice of new Firmware releases and offers updated Firmware for download.  
([www.samsungminiprinters.com](http://www.samsungminiprinters.com))
- 4) Run the Unified Utility executable file.
- 5) Select "Port" and click the "Firmware Download Manager" button.  
Refer to the Bluetooth Connection Manual regarding the Port (may vary according to device) “



- 6) After clicking the “Start Download” button, select the Firmware file.  
(e.g. spp-r20020070103.flc)



- 7) The printer error lamp blinks from the beginning of the Firmware file download, and turns off when the download is complete.

The printer self-test function can be used to confirm the Firmware update.

**※ If the printer error lamp remains on, download the Firmware file again after resetting the printer.**