

Ishida Uni-5 Scales

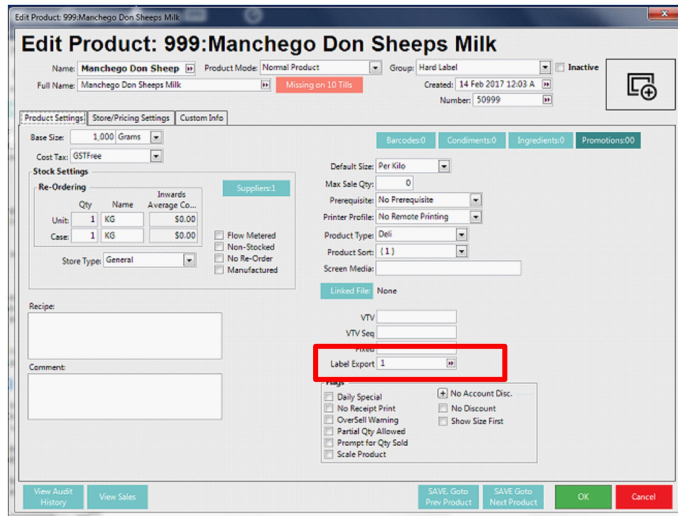


Note: This is not how to set up the scales for integration this is just a guide on how to set up the buttons and link the products in Bepoz for operation of the scales.

Products:

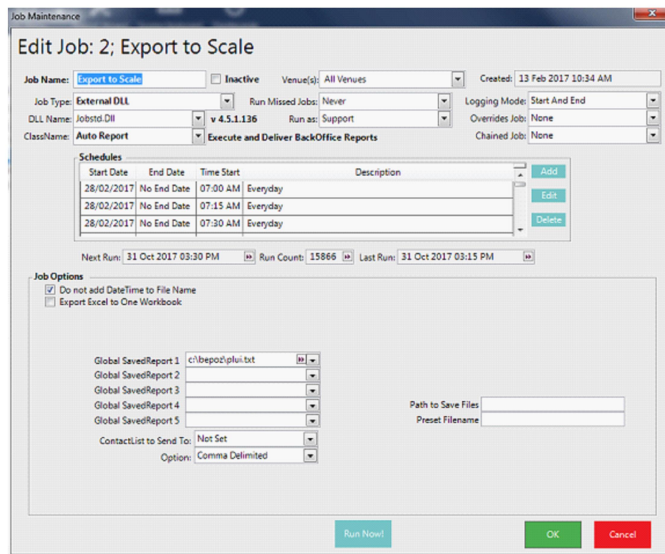
The products will need to be set up with the export code attached to the product Ex: Label Export code 1.

See screen shot below.



This will need to be set up before moving on to the next step and will need to be set up in each individual product.

Once this has been set up you will need to go into the maintenance panel and scheduled jobs and run the job that is set up like the screen shot below “the job is set to run every 15 minutes” To force run now.



This is all the setup completed on the Bepoz back office program you will now need to open Scale Link Pro 5 program to finish the setup

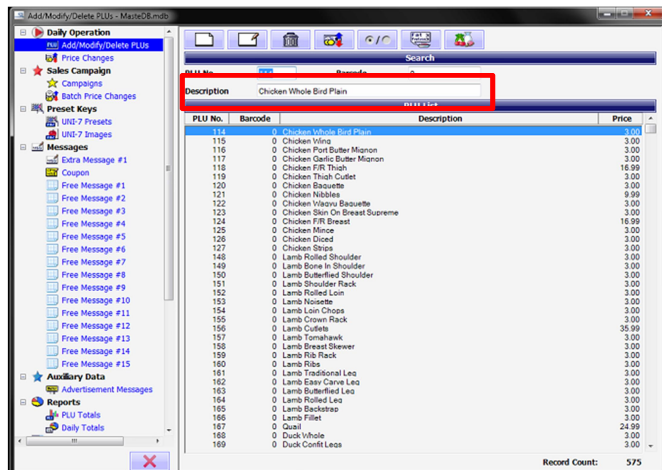
Scale Link Pro:

The Default username is Administrator with no password.

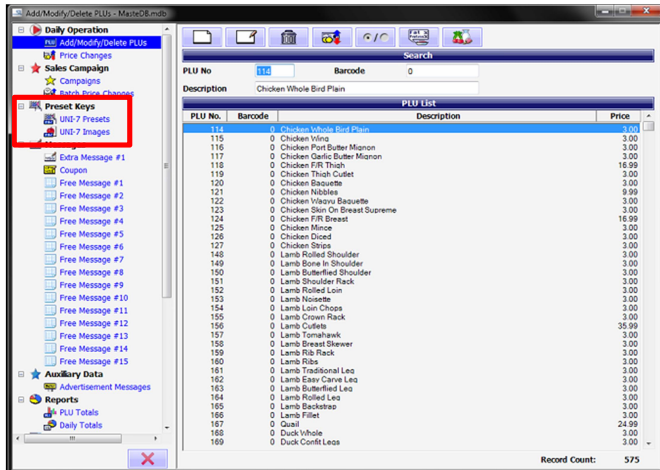
Log into the program.



Once the program is open you will need to find the Product PLU that the system had assigned to match the product in Bepoz. You can search by the name in Bepoz in the description I have highlighted in the screen shot below. "Please take note of the PLU number assigned as you will need the number to assign the buttons on the scales"

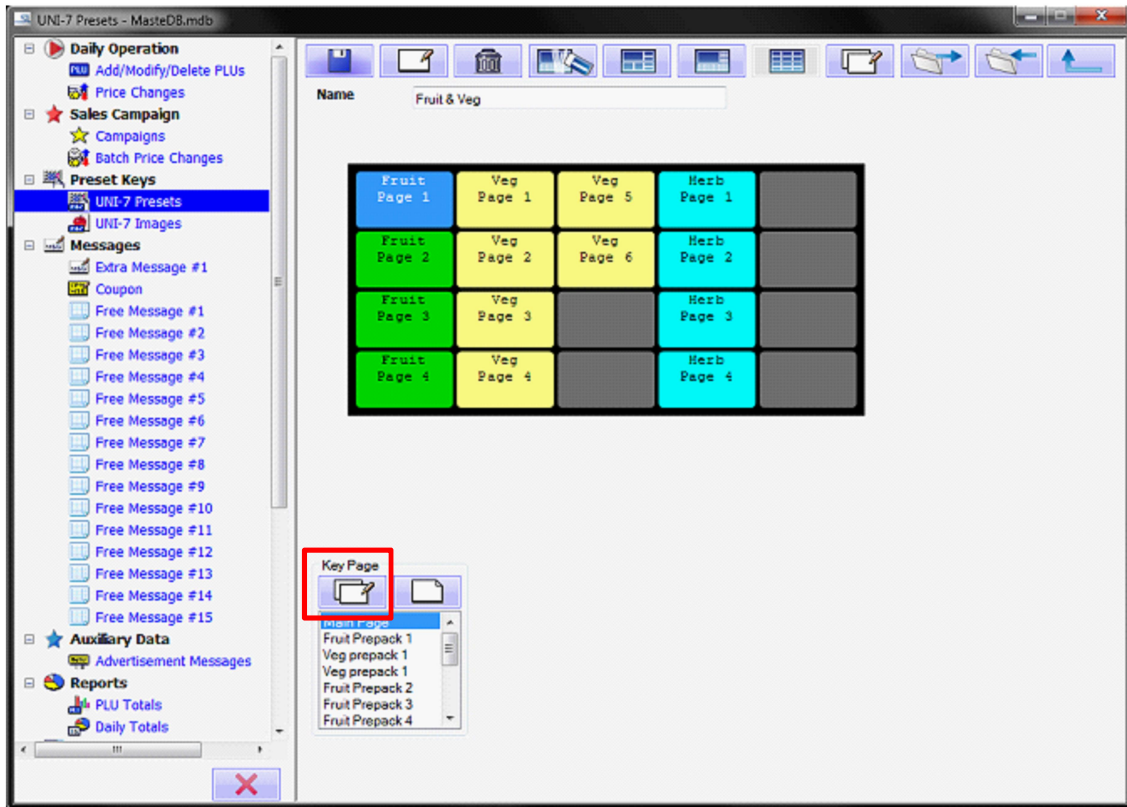


Once you have the PLU's for the products you want to add, Move to the UNI -7 pre-set button under Pre-set Keys Grouping. Found here in the screen shot below

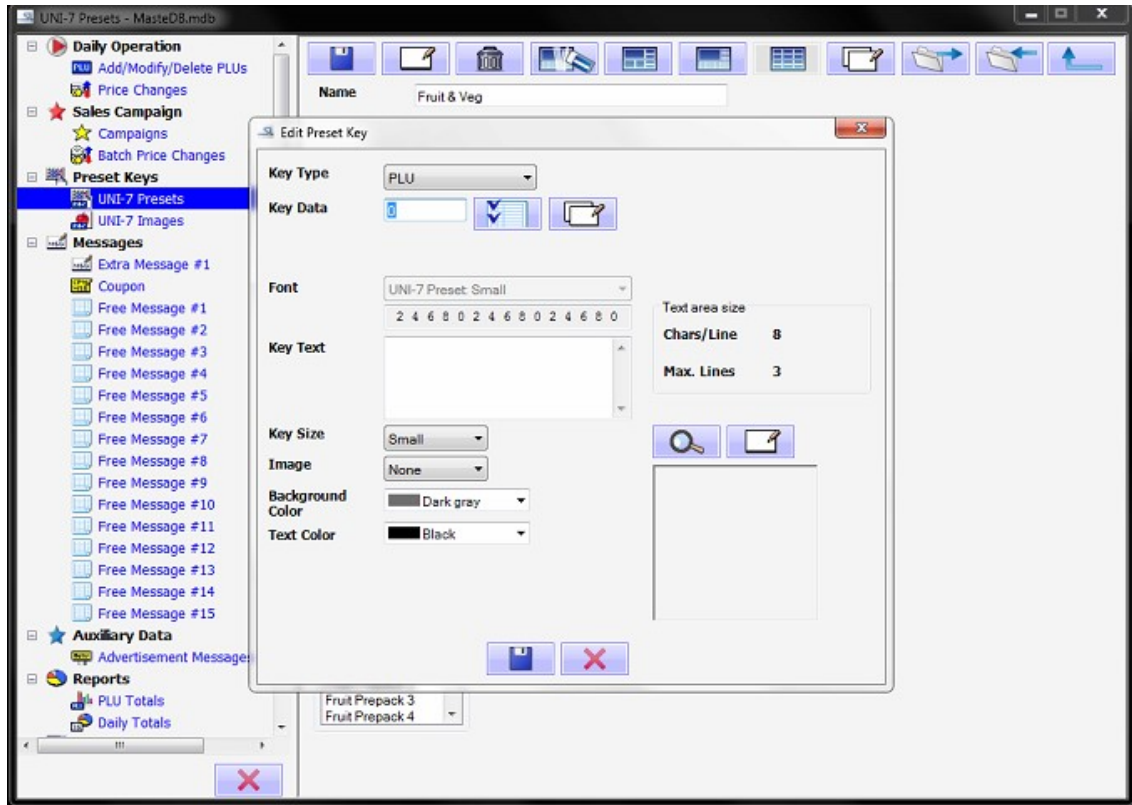


Next Select the Group you would like to edit then View Select the group below to assign the plus.

If you want to create a new page group You will need to select the New Page Button As highlighted below in screen shot.



When selecting a single product double click on the space. And fill in the details as required see screen shot below. For a group it will need to be set as page group and set to the page number when created.



Once buttons are created the information will needed to be pushed to the scales this is achieved by going to Scale Communication then send and receive you will need to set the data type to uni 7 presets and send then after you have sent once you will need to send the plus to the scales As well. See screenshot below this will now send all items to the scales.

